

PREVIOUS WINNERS

Top Section

Oct Zack Norris, Gloucester
Sep Calvin Chris Biju, Maidenhead
Krish Keshari, Woodley
William Zhang, Ascot
Lucas Chinien, Caversham
Aug Krish Keshari, Woodley
Jul Mayank Palav, Reading
Jun Zack Norris, Gloucester
May Karan Abbasi, Maidenhead
Aden Kennedy, Bicester
Krish Keshari, Woodley

Intermediate Section

Oct Mithran Subburaj, Lower Earley
Sep Krutarth Kulkarni, Slough
Aug Jason Zhang, Ascot
Calvin Chris Biju, Maidenhead
Lisirui (Ricky) Shieh, Abingdon
Theodore Griffiths, Warfield
Jul Ouamane Younes, Morocco
Jun Benas Arbocius, Reading
May William Zhang, Ascot

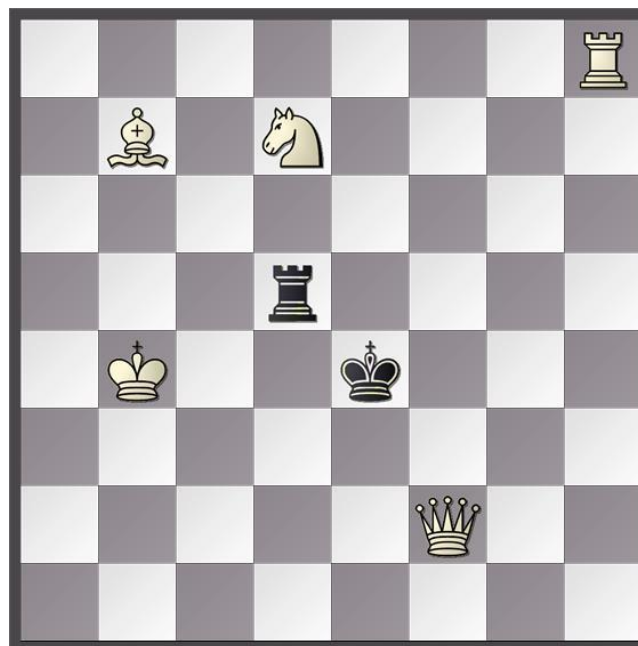
Beginners Section

Oct Jigar Saini, Cippenham
Lisa Schlackow, Oxford
Sep Venkata Hemanth Myneni, Maidenhead
Aug Varnesh Ramesh, Reading
Jul Calvin Chris Biju, Maidenhead
Jun Eden Yang, Abingdon
Nihar Ramdoot, Maidenhead
May Arthur Guindani, Abingdon

TOURNAMENT PROBLEM

White to play and mate in two moves.

Black (2 Men)



White (5 Men)

English Chess Federation Membership

All participants should have ECF membership at "junior silver" or higher level.

One year's free ECF junior silver membership is available for junior players who have not previously been members of the ECF. Details: -

[Membership Rates and Joining Details](#)

Directions

The postcode SL6 4QQ directs to the long school entrance drive off Cannon Lane. At the school gate turn left and park in the sports hall car park.

MAIDENHEAD JUNIOR TOURNAMENT

Saturday 3rd February 2024

Claire's Court Junior School Sports Hall
Cannon Lane, Maidenhead, Berkshire
Postcode for Sat Nav SL6 4QQ

**Top Section, Intermediate Section
and Beginners Section.**

All sections rated ECF Rapid Play

Arrival Time 12.45 p.m.

Start Time: 1.00 p.m.

Finish Time: 5.00 p.m.

**Trophies for first, second and third
place in each section and fourth
place in Intermediate and
Beginners Sections**

Entry fee £8 by Wed 31st January.

Late fees apply after this date.

**Open to all children under the age of 18
on 31st August 2023.**

[Maidenhead Junior Chess Club Website](#)

Top Section and Intermediate Section

Games rated ECF Rapid Play
All moves in 15 minutes + 5 seconds per move.
Five rounds

Beginners Section

Games rated ECF Rapid Play
All moves in 10 minutes + 5 seconds per move.
Seven rounds

Pairings

Pairings will be in accordance with the swiss system. Everyone plays in all rounds.

Tie Splits will be by: -

- 1) Direct encounter
- 2) Sum of opponents scores
- 3) Play-off with 5 minutes + 5 seconds per move

Entry Fees

£8 by the Wednesday before the event
£10 on the Thursday before the event
£12 on the Friday before the event
£15 on the day

Entrants on the Day should arrive half an hour before the start of play and may miss the first round if they arrive less than 15 minutes before the start of play.

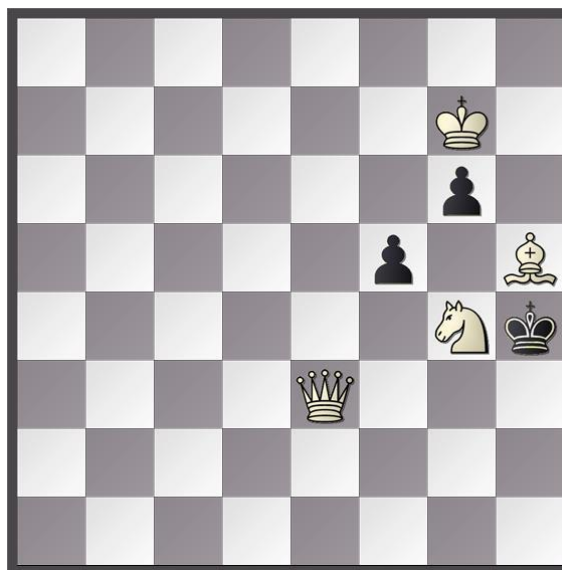
Illegal Move Rule An illegal move is completed once the opponent's clock has been started. If either player has less than five minutes left on the clock and an illegal move is made, the arbiter may award the opponent two minutes for the first offence, and two minutes for the second offence. Three illegal moves by the same player when either player has less than five minutes will lead to the loss of the game.

SOLUTION TO PROBLEM

For Tournament on 6th January 2024

C.A. Boivin 1871

Black (3 Men)



White (4 Men)

White to play and mate in two moves.

1 Qf4

1.....Kh3

1.....K x h5

1.....f x g4

1.....g x h5

1.....g5

2 Qh2 mate

2 Nf6 mate

2 Q x g4 mate

2 Nf2 mate

2 Qh2 mate

Parents Responsibility

The organisers accept no responsibility for any loss, theft, or accident during an event. Adult supervision will only be provided in the tournament hall. Parents are responsible for their children during the event and agree to the terms and conditions in this entry form as a condition of entry, and that player's results and rating information may be published to the internet, and that email addresses and child's details supplied may be used for future events.

ENTRY DETAILS

Entry is: -

by email to Nigel Dennis
nigelwdennis@btinternet.com

with BACS payment to
Maidenhead Junior Chess Club
Barclays Bank sort code 20-74-09
account number 43765997

Other methods of payment are accepted.

Entrants to previous Maidenhead Junior Tournaments only need to give the name of the child entering with any changed details, date of event entering and preferred section.

New entrants must give: -

Full names of child entering
Boy or Girl
Home Postal address
Name of school
Telephone number
Date of birth and age
ECF membership number
Email address
Date of event entering
Preferred section

The preferred section is applicable when the player's rating is borderline between sections.

Entry Fees

£8 by Wednesday 31st January
£10 on Thursday 1st February
£12 on Friday 2nd February
£15 on the day
Additional £3 for ECF non-members

See also information about

Entries on the day
ECF Membership