

## PREVIOUS WINNERS

### Top Section

Dec Mithran Subburaj, Lower Earley  
Oct Benas Arbocius, Reading  
Sep Cieslik Bartosz, Northwood  
Aug Evan Pitts, Caversham  
Elon Khoo, Didcot  
Jul Guranshvir Singh, Aylesbury  
Jun Benas Arbocius, Reading  
Venkata Hemanth Myneni, Maidenhead

### Intermediate Section

Dec Khoa (Kevin) Nguyen, Hayes  
Oct Anievv Pirashanth, Penarth, Wales  
Sep Samuel Nyonyintono, Wokingham  
Aug Ahmad Amir, Slough  
Jul Khoa (Kevin) Nguyen, Hayes  
Jun Tusheet Thakre, Slough

### Beginners Section

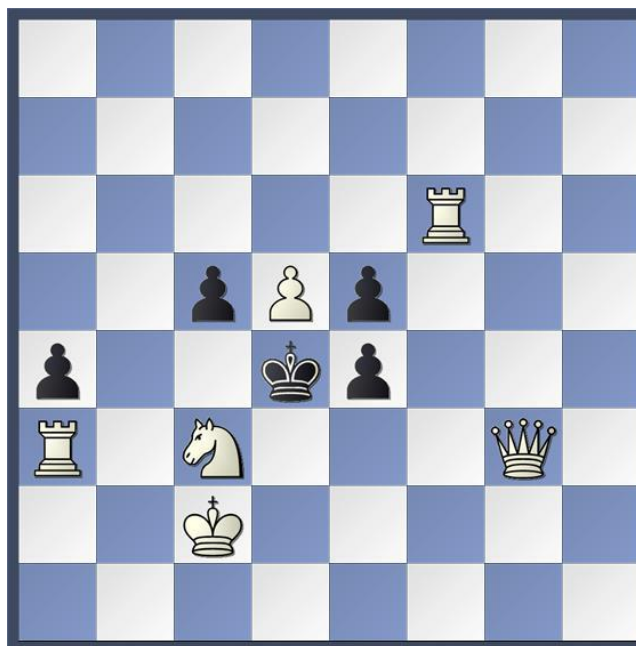
Dec Constantinos Lazopoulos, Guildford  
Oct Harry Tran, Windsor  
Sep Tim Robinson, Oxford  
Aug Samuel Nyonyintono, Wokingham  
Jul Charles Jerrum, Winkfield  
Spencer Monroe, Guildford  
Harris Malik, Slough  
Jun Vishruth Yajamaan, Maidenhead



## TOURNAMENT PROBLEM

White to play and mate in two moves.

Black (5 Men)



White (6 Men)

### English Chess Federation Membership

All participants should have ECF membership at "junior gold" or higher level.

One year's free ECF junior gold membership is available for junior players who have not previously been members of the ECF. Details: -

[Membership Rates and Joining Details](#)

### Directions

From M4 leave at junction 8/9. From M40 leave at junction 4. The postcode SL6 4QQ directs to the long school entrance drive off Cannon Lane. At the school gate turn left and park in the sports hall car park.

## MAIDENHEAD JUNIOR TOURNAMENT

**Saturday 7<sup>th</sup> February 2026**

Claire's Court Junior School Sports Hall  
Cannon Lane, Maidenhead, Berkshire  
Postcode for Sat Nav SL6 4QQ

**Top Section, Intermediate Section  
and Beginners Section.**

**All sections rated ECF Rapid Play**

**Arrival Time 12.45 p.m.**

**Start Time: 1.00 p.m.**

**Finish Time: 5.00 p.m.**

**Trophies for first, second & third in each  
section, fourth in Intermediate Section  
and fourth and fifth in the Beginners  
Section**

**Entry fee £10 by Wed 4<sup>th</sup> February  
Late fees apply after this date.**

**Open to all children under the age of 18  
on 31<sup>st</sup> August 2025.**

[Maidenhead Junior Chess Club Website](#)

[Maidenhead Juniors Website](#)



## Top Section and Intermediate Section

Games rated ECF Rapid Play  
All moves in 15 minutes + 5 seconds per move.  
Five rounds

## Beginners Section

Games rated ECF Rapid Play  
All moves in 10 minutes + 5 seconds per move.  
Seven rounds

## Pairings

Pairings will be in accordance with the swiss system. Everyone plays in all rounds.

## Tie Splits will be by: -

- 1) Direct encounter
- 2) Sum of opponents scores
- 3) Play-off with 5 minutes + 5 seconds per move

## Entry Fees

£10 by the Wednesday before the event  
£12 on the Thursday before the event  
£14 on the Friday before the event  
£17 on the day

**Entrants on the Day** should arrive half an hour before the start of play and may miss the first round if they arrive less than 15 minutes before the start of play.

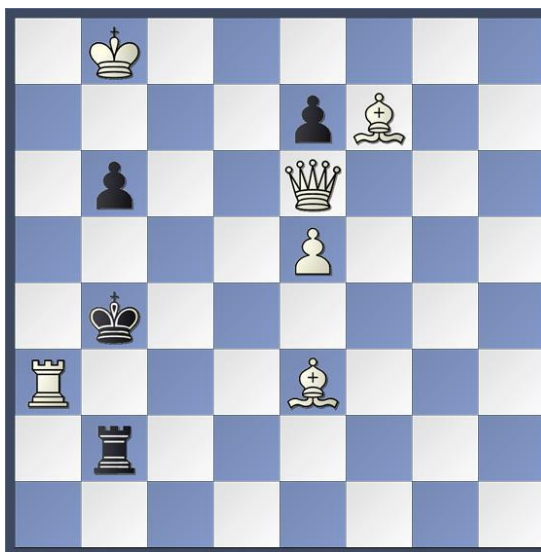
**Illegal Move Rule** An illegal move is completed once the opponent's clock has been started. If either player has less than five minutes left on the clock and an illegal move is made, the arbiter may award the opponent two minutes for the first offence, and two minutes for the second offence. Three illegal moves by the same player when either player has less than five minutes will lead to the loss of the game.

## SOLUTION TO PROBLEM

For Tournament on 10<sup>th</sup> January 2026

Sam Loyd 1868

Black (4 Men)



White (6 Men)

White to play and mate in two moves.

- |               |                      |
|---------------|----------------------|
| 1 Bc1         |                      |
| 1.....K x a3  | 2 Qb3 mate           |
| 1.....Kc5     | 2 Qc4 mate           |
| 1.....b5      | 2 Q x e7 mate        |
| 1.....R moves | 2 Q x b6 or Qc4 mate |

## Parents Responsibility

The organisers accept no responsibility for any loss, theft, or accident during an event. Adult supervision will only be provided in the tournament hall. Parents are responsible for their children during the event and agree to the terms and conditions in this entry form as a condition of entry, and that player's results and rating information may be published to the internet, and that email addresses and child's details supplied may be used to send information about future events. Parents must inform the organiser if their child is not to appear in a photograph.

## ENTRY DETAILS

Entry is: -

by email to Nigel Dennis  
[nigelwdennis@btinternet.com](mailto:nigelwdennis@btinternet.com)

with BACS payment to  
Maidenhead Junior Chess Club  
Barclays Bank sort code 20-74-09  
account number 43765997  
Reference – Child Entering's Name

Other methods of payment are accepted  
Entrants to previous Maidenhead Junior  
Tournaments only need to give the name of the  
child entering with any changed details, date of  
event entering and preferred section.

New entrants must give: -

Full names of child  
Boy or Girl  
Home Postal address  
Name of school  
Telephone number  
Date of birth and age  
ECF junior gold membership number  
Email address  
Date of event  
Preferred section

The preferred section is applicable when the  
player's rating is borderline between sections.

Entry Fees

£10 by Wednesday 4<sup>th</sup> February  
£12 on Thursday 5<sup>th</sup> February  
£14 on Friday 6<sup>th</sup> February  
£17 on the day  
Additional £3 for ECF non-members  
And ECF Bronze members

See also information about

Entrants on the day  
ECF Membership