

PREVIOUS WINNERS

Top Section

Oct Benas Arbocius, Reading
Sep Cieslik Bartosz, Northwood
Aug Evan Pitts, Caversham
Elon Khoo, Didcot
Jul Guranshvir Singh, Aylesbury
Jun Benas Arbocius, Reading
Venkata Hemanth Myneni, Maidenhead
May Benas Arbocius, Reading
Mithran Subburaj, Lower Earley
Evan Pitts, Caversham

Intermediate Section

Oct Anievv Pirashanth, Penarth, Wales
Sep Samuel Nyonyintono, Wokingham
Aug Ahmad Amir, Slough
Jul Khoa (Kevin) Nguyen, Hayes
Jun Tusheet Thakre, Slough
May Ashlesh Bairy, Caversham
Kian Abraham, Ebbsfleet
Satyan Padhi, Maidenhead
Zack Coulthard, Seer Green

Beginners Section

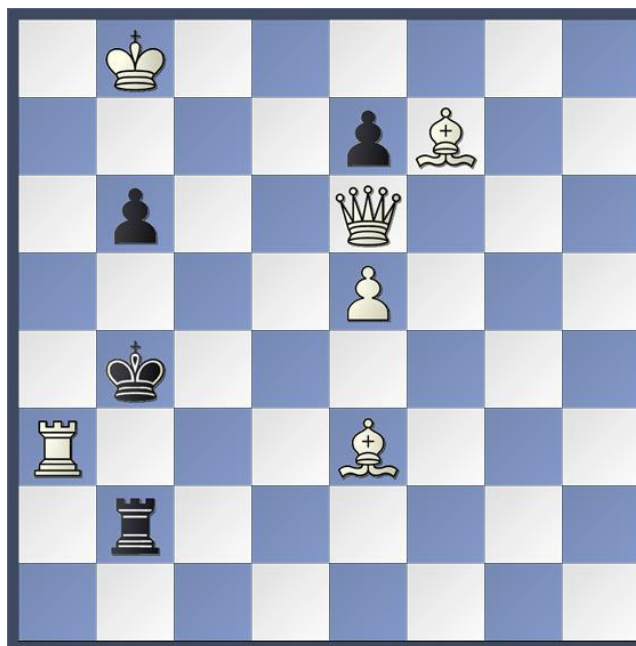
Oct Harry Tran, Windsor
Sep Tim Robinson, Oxford
Aug Samuel Nyonyintono, Wokingham
Jul Charles Jerrum, Winkfield
Spencer Monro, Guildford
Harris Malik, Slough
Jun Vishruth Yajamaan, Maidenhead
May Kaiqiao Chen, Oxford



TOURNAMENT PROBLEM

White to play and mate in two moves.

Black (4 Men)



White (6 Men)

English Chess Federation Membership

All participants should have ECF membership at "junior gold" or higher level.

One year's free ECF junior gold membership is available for junior players who have not previously been members of the ECF. Details: -

[Membership Rates and Joining Details](#)

Directions

From M4 leave at junction 8/9. From M40 leave at junction 4. The postcode SL6 4QQ directs to the long school entrance drive off Cannon Lane. At the school gate turn left and park in the sports hall car park.

MAIDENHEAD JUNIOR TOURNAMENT

Saturday 10th January 2026

Claire's Court Junior School Sports Hall
Cannon Lane, Maidenhead, Berkshire
Postcode for Sat Nav SL6 4QQ

**Top Section, Intermediate Section
and Beginners Section.**

All sections rated ECF Rapid Play

Arrival Time 12.45 p.m.

Start Time: 1.00 p.m.

Finish Time: 5.00 p.m.

**Trophies for first, second & third in each
section, fourth in Intermediate Section
and fourth and fifth in the Beginners
Section**

**Entry fee £10 by Wed 7th January
Late fees apply after this date.**

**Open to all children under the age of 18
on 31st August 2025.**

[Maidenhead Junior Chess Club Website](#)

[Maidenhead Juniors Website](#)



Top Section and Intermediate Section

Games rated ECF Rapid Play
All moves in 15 minutes + 5 seconds per move.
Five rounds

Beginners Section

Games rated ECF Rapid Play
All moves in 10 minutes + 5 seconds per move.
Seven rounds

Pairings

Pairings will be in accordance with the swiss system. Everyone plays in all rounds.

Tie Splits will be by: -

- 1) Direct encounter
- 2) Sum of opponents scores
- 3) Play-off with 5 minutes + 5 seconds per move

Entry Fees

£10 by the Wednesday before the event
£12 on the Thursday before the event
£14 on the Friday before the event
£17 on the day

Entrants on the Day should arrive half an hour before the start of play and may miss the first round if they arrive less than 15 minutes before the start of play.

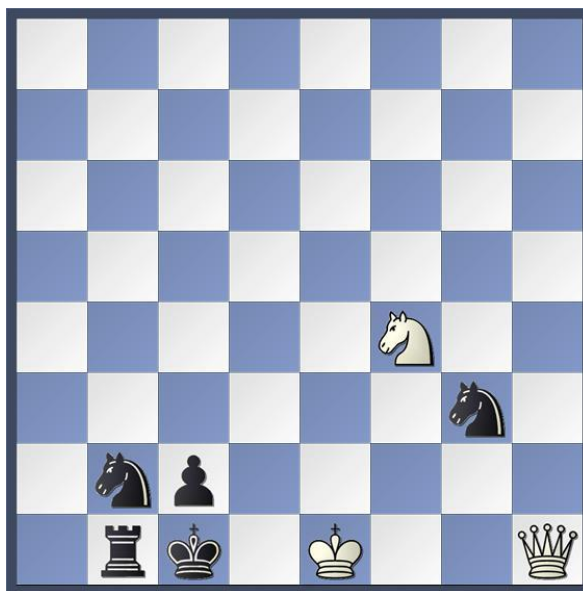
Illegal Move Rule An illegal move is completed once the opponent's clock has been started. If either player has less than five minutes left on the clock and an illegal move is made, the arbiter may award the opponent two minutes for the first offence, and two minutes for the second offence. Three illegal moves by the same player when either player has less than five minutes will lead to the loss of the game.

SOLUTION TO PROBLEM

For Tournament on 6th December 2025

Sam Loyd 1857

Black (5 Men)



White (3 Men)

White to play and mate in two moves.

1 Qa8

1.....Ra1

1.....Nb moves

1.....Ng moves

2 Q x a1 mate

2 Nd3 (or xd3) mate

2 Ne2 (or xe2) mate

Parents Responsibility

The organisers accept no responsibility for any loss, theft, or accident during an event. Adult supervision will only be provided in the tournament hall. Parents are responsible for their children during the event and agree to the terms and conditions in this entry form as a condition of entry, and that player's results and rating information may be published to the internet, and that email addresses and child's details supplied may be used to send information about future events. Parents must inform the organiser if their child is not to appear in a photograph.

ENTRY DETAILS

Entry is: -

by email to Nigel Dennis
nigelwdennis@btinternet.com

with BACS payment to
Maidenhead Junior Chess Club
Barclays Bank sort code 20-74-09
account number 43765997
Reference – Child Entering's Name

Other methods of payment are accepted
Entrants to previous Maidenhead Junior
Tournaments only need to give the name of the
child entering with any changed details, date of
event entering and preferred section.

New entrants must give: -

Full names of child
Boy or Girl
Home Postal address
Name of school
Telephone number
Date of birth and age
ECF junior gold membership number
Email address
Date of event
Preferred section

The preferred section is applicable when the
player's rating is borderline between sections.

Entry Fees

£10 by Wednesday 7th January
£12 on Thursday 8th January
£14 on Friday 9th January
£17 on the day
Additional £3 for ECF non-members
And ECF Bronze members

See also information about

Entrants on the day
ECF Membership